



**ARCHITECTS LANDSCAPE ARCHITECTS INTERIOR DESIGNERS**

D-220, ANAND VIHAR, NEW DELHI – 92 ; Tel: 4242 7206  
e-mail : [singalassociates@airtelmail.in](mailto:singalassociates@airtelmail.in); [design@singalassociates.com](mailto:design@singalassociates.com)  
website: [www.singalassociates.com](http://www.singalassociates.com)



## Firm Profile

**Singal Associates (SA)** is a Delhi based Landscape Architecture firm established in 1990 by an internationally experienced Landscape Architect, **Krishan C. Singal**. Armed with significant experience in open space designing, we provide planning and design services through all phases of landscape design. We practice landscape architecture with an emphasis on combining creative design solutions with sound horticultural and environmental considerations. We apply our landscape knowledge to all of our projects, whether they are in urban, rural, exotic or native habitat.

The firm is embraced by a multi-disciplinary team of landscape architects & architects which operate under the control of Principal Landscape Architect **Krishan C. Singal** who personally ensures maintenance of high standard of design from the Functional and Aesthetic point of view. The services are rendered with the utmost consideration for high quality, with respect for and enrichment of the environment, and to provide the client with cost effective and innovative designs possible within his resources.

The Firm is fully equipped to handle jobs of various types and magnitude. Its activities cover Landscape Architectural Projects of Airports, Commercial Complexes, Hospitals, Factories & Press Buildings, Institutional & Embassy Projects, Residential Bungalows, Terrace Gardens, Farm Houses, Housing Complexes, Corporate Offices, Health Clubs, Hotels, Holiday Resorts, Recreation Parks, Sports Complexes and Township Projects.

Mr. Krishan C. Singal brings more than forty years of experience in landscape architectural practice. He also contributed to projects involving campus master planning, commercial and residential land development, horticultural exhibit design, as well as ecological management and historic landscape restoration.

The Firm has in-house Computer Aided Design (i.e. CAD) and allied computer oriented facilities to integrate various modern Site Planning and Landscape Architectural Designs.

## SELECTIVE LANDSCAPE PROJECTS UNDERTAKEN BY THE FIRM

### 1.0 AIRPORTS / AIR TERMINALS

- 1.1 Operational Complex (Block-I), Safdarjung Airport, New Delhi.
- 1.2 Jaipur Air Terminal, Jaipur
- 1.3 Guwahati Air Terminal, Guwahati.

### 2.0 COMMERCIAL COMPLEXES

- 2.1 Commercial Complex at Shatababinager Meerut (U.P.) - Concept Stage only.
- 2.2 Shopping Complex and Town Garden for Raymond Cement Works, Gopal Nagar (M.P.).
- 2.3 City Centre and its environs at Salt Lake, Kolkata in 10 acres of land designed by architect Charles Correa for Bengal Ambuja Metro Development Limited.



- 2.4 City Centre and its environs at Siliguri, Kolkata in 10 acres of land designed by Morphogenesis for Bengal Ambuja Metro Development Limited.



- 2.5 City Centre and its environs at New Town, Kolkata in 5 acres of land designed by Architect Kapil Bhalla from SEARCH, Mumbai for Bengal Ambuja Metro Development Limited.



- 2.6 The Celebration Mall and its environs at Amritsar in 1.4 acres of land designed by Architect Moti Bahri for Advance India Projects Ltd.
- 2.7 City Centre and its environs at Raipur in 8 acres of land designed by Architect Vivek Rathore for Ambuja Realty Development Limited – **ongoing project**.
- 2.8 D Mall and its environs at District Centre, Wazirpur (Netaji Subhash Place), New Delhi designed by Khurmi Associates, New Delhi for Mera Baba Reality Associates (P) Ltd.
- 2.9 D Mall and its environs at Twin District Centre, Rohini, New Delhi designed by Khurmi Associates, New Delhi for Mera Baba Reality Associates (P) Ltd.

- 2.10 Forum Rangoli Commercial Complex, Belur, Kolkata in 3.77 acres of land for Forum Riveria Construction Pvt. Ltd., Kolkata designed by Agrawal & Agrawal Associates, Kolkata – **ongoing project.**
- 2.11 The Celebration Mall and its environs at Nagpur in 9.42 acres of land designed by RSP Architects, Singapore for Nunlet Projects Private Limited, New Delhi.
- 2.12 Forum Centenary Mall, Jamshedpur in 5.5 acres of land for Forum Retail Pvt. Ltd., Kolkata designed by Benoy Associates, Singapore – **ongoing project.**



- 2.13 K W Delhi 6 Commercial Complex at Raj Nagar Extension in 3.30 acres of land for M/s K World Estate Pvt. Ltd. designed by M/s Deepak Mehta & Associates, New Delhi – **ongoing project.**
- 2.14 Logix Neoworld Commercial Complex at Sector 150, Noida in 3.0 acres of land for M/s Logix Infra Developers Pvt. Ltd. designed by M/s Confluence, New Delhi – **ongoing project.**
- 2.15 Saya X Mall at Greater Noida (West) in 3.0 acres of land for M/s Saya Buildcon Consortium Pvt. Ltd., Greater Noida (West) designed by M/s Brij (India) Architects, New Delhi– **ongoing project.**
- 2.16 Civitech Santoni Mall at Greater Noida (West) in 3.733 acres of land for M/s Civitech Buildcon Pvt. Ltd., Noida designed by M/s Architect Hafeez Contractor, Mumbai – **ongoing project.**
- 2.17 Signature Global Mall at Vaishali for M/s Sarvpriya Securities Private Ltd., Vaishali designed by M/s Architect Hafeez Contractor, Mumbai – **ongoing project.**

### 3.0 HOSPITALS

- 3.1 Park Hospital at Kolkata promoted by Park Hospital Ltd., a 65 bed super specialty hospital.
- 3.2 Millenium Hospital and Research Institute , Plot No. 1B, Pusa Road New Delhi.
- 3.3 200 Bedded Hospital at Ashok Vihar, Phase IV, Delhi (site area 5 acres) designed by Architects Benjamin Benjamin and Vats, New Delhi (Including preparation of drawings for DUAC approval).
- 3.4 Yashoda Hospital & Research Center Ltd. Ghaziabad designed by Architects Space Designers, Ghaziabad.
- 3.5 Landscape design work for The Institute for Liver and Biliary Sciences, Vasant Kunj New Delhi, Phase II - site area 5 acres – Competition Project with Architects Benjamin Benjamin and Vats, New Delhi.
- 3.6 Landscape design work for Tata Medical Centre, Kolkata (Plot Area 13.36 Acres) designed by Architects Cannon Design, New York.



- 3.7 Expansion of Rao Tula Ram Memorial Hospital at Jafferpur, Delhi (Site area 3.5 acres) designed by Architects Benjamin Benjamin and Vats, New Delhi - **ongoing project**.
- 3.8 Expansion of Maharishi Valmiki Hospital, Pooth Khurd, Delhi (Site area 2.5 acres) designed by Architects Benjamin Benjamin and Vats, New Delhi - **ongoing project**.
- 3.9 200 bedded Hospital at Madipur, Delhi (Site area 6.17 acres) designed by Architects Benjamin Benjamin and Vats, New Delhi - **ongoing project**.

#### 4.0 FACTORIES & PRESS BUILDINGS

- 4.1 Sankrail Grinding unit at Sankrail Distt. Howrah, West Bengal of Ambuja Cement Eastern Ltd. - Site area 45 acres including 5 acres of housing area.
- 4.2 Calcutta Leather Complex at Salt Lake, Kolkata in 1100 acres of land comprising new tanners, effluent treatment plant and all other infrastructure associated with an Industrial Township like housing, entertainment centers, hospitals, commercial buildings, etc. for M.L. Dalmiya & Co. Ltd.
- 4.3 Maratha Cement Works, Gadchandur (Maharashtra) site area 3150 acres including 214 acres of Main Plant Area & 134 acres of Township area designed by Ahmedabad based Architect Shri Hasmukh Patel.



- 4.4 Times of India Press Building at Ghaziabad (U.P.) Cost Rs. 2.5 million.
- 4.5 Clinker Grinding Unit Farakka, Distt. Murshidabad, West Bengal - site area 70 acres including residential area.
- 4.6 Orient Clothing Factory, Gurgaon for M/S Orient Clothing Co. (P) Ltd. – Site area 2.3 acres.
- 4.7 ABP Press Complex at Barasat, Kolkata in 13 acres of land designed by Renesa, New Delhi for ABP Pvt. Ltd.
- 4.8 HT Press Complex at Greater Noida, UP in 4.5 acres of land designed by Renesa, New Delhi for HT Burda Media Ltd.
- 4.9 Ambuja Cement Plant, Bhatapara, Raipur for Ambuja Cements Ltd.
- 4.10 Ceat Tyres Factory, Halol, Vadodara, Gujarat in 115.57 acres of land area for Ceat Ltd. (RPG Group), Mumbai.

#### 5.0 INSTITUTIONAL AND EMBASSY BUILDINGS.

- 5.1 Delhi Institute of Technology at Dwarka, New Delhi with Architects Bose Brothers, New Delhi.
- 5.2 Banwari Lal Jinda Suiwala College, Tosham, Haryana. Cost Rs. 2.5 million.
- 5.3 Indian Institute of Tourism & Travel Management of ITDC at Gawalior.

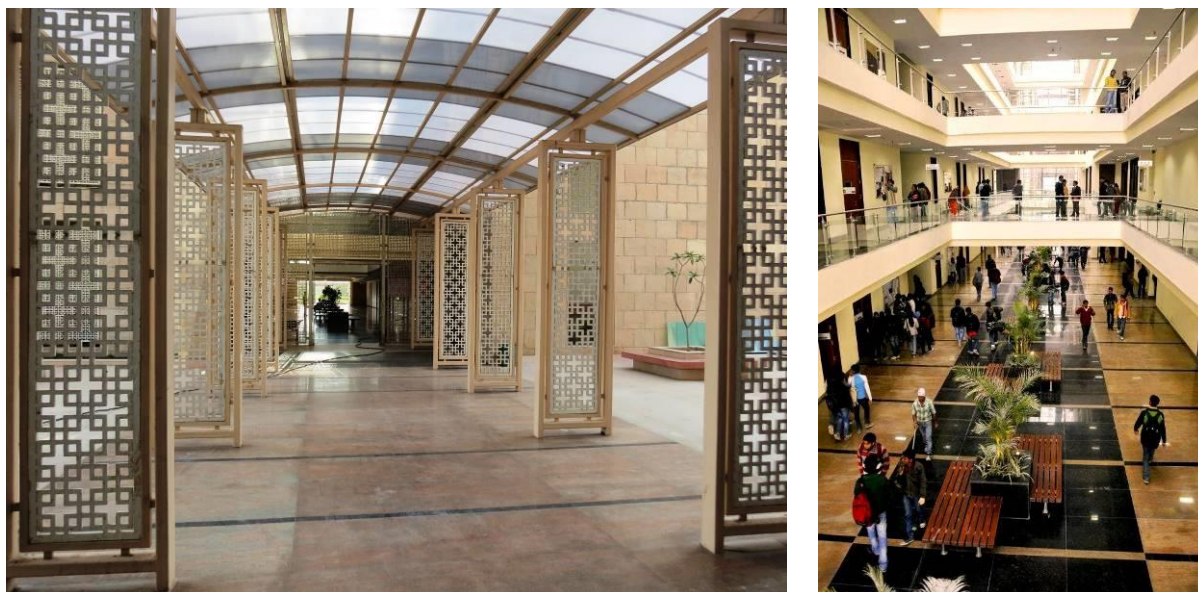
- 5.4 Namgyal Institute at South of IIT Institutional area, New Delhi for Turner Morrison Ltd. Cost Rs. 2.5 million. (Including preparation of drawings for DUAC approval).



- 5.5 Asian School at Vasant Vihar & Aryan School at Malsi, Dehradun.
- 5.6 Harvard Institute of Management and Technology on plot no. 8, Institutional Area, Greater Noida (U.P.).
- 5.7 Air Complex at Kingsway Camp, Delhi. (Including preparation of drawings for DUAC approval).
- 5.8 Indian Embassy in Muscat - concept stage only with Architects Bose Brothers, New Delhi.
- 5.9 Bengal Ambuja Housing Development Ltd. Corporate Bldg. 'Vishwakarma' at Kolkata.
- 5.10 Ecospace - IT Park at New Town, Kolkata in 10 acres of land designed by RSP Architects, Singapore for Udayan Greenfield Developers Pvt. Ltd., Kolkata.
- 5.11 Dev Bhoomi Institute, Rudrapur – Site area 5 acres.
- 5.12 Institute of Technology & Marine Engineering (ITME) at West Bengal in 30 acres of land designed by Anjan Gupta Architects, Kolkata for Institute of Technology & Marine Engineering, West Bengal.
- 5.13 World Health Organization, Indraprastha Estate, New Delhi – Site area 1.83 acres.
- 5.14 Asia Pacific Institute of Management at Lucknow, UP in 25 acres of land designed by Kothari Associates, New Delhi for Asia Pacific Institute of Management, Jasola, New Delhi – **ongoing project.**
- 5.15 SP Infocity at New Town, Rajarhaat, Kolkata in 50 acres of land designed by Singapore based Architects Surbana for Bengal Shapoorji Developers Pvt. Ltd.
- 5.16 Galgotia College Of Engineering and Technology (GCET), Greater Noida in 20 acres of land designed by Raj Rewal Associates – **ongoing project.**



- 5.17 Galgotia University Campus, Greater Noida in 50 acres of land designed by Delhi based Architects Arcop Associates – **ongoing project.**



- 5.18 The Asian School, Dehradun in 30 acres of land – **ongoing project.**



- 5.19 NTPC Netra Complex, Greater Noida in 75 acres of land designed by Raj Rewal Associates – **ongoing project.**

## 6.0 RESIDENCES, FARM HOUSES & TERRACE GARDENS

- 6.1 Mr. J.P. Singh's farm on Plot No. 51 at Sainik Farm, New Delhi. Cost Rs. 3.00 million.
- 6.2 Mr. Naresh K. Aggarwala's farm at 80, Sainik Farm, New Delhi. Cost Rs. 2.5 million.
- 6.3 Landscaping around Administration Block & Executive Bungalows for Raymonds Cement works, Gopal Nagar (M.P.)
- 6.4 Meditation Centre at Abhaypur, Sohna (Haryana), for Heritage, South Extension - I, New Delhi. Cost Rs. 7.5 million.
- 6.5 M/S. Bhandari Builders farm at Samalkha, New Delhi. Cost Rs. 5.0 million.
- 6.6 Bhatnagar's Farm opp. Garden Estate, Haryana. Cost Rs. 4.5 million.
- 6.7 Mayor's Farm at D2 Ansal Farms Satbari, New Delhi Cost Rs. 4.5 million.
- 6.8 Neotia farm at Najafgarh Road, New Delhi. Cost Rs. 7.5 million.



- 6.9 Thukral Bungalow at Civil Lines, Delhi. Cost Rs. 1.0 million.
- 6.10 Priyadarshani Farm at Rajokari, New Delhi. Cost Rs. 4.00 million.
- 6.11 Mr. R.R. Dalmia's Farm at Sainik Farm, New Delhi. Cost Rs. 3.0 million
- 6.12 Mr. Dharamvir's Farm at Satbari, New Delhi. Cost Rs. 3.0 million.
- 6.13 Mr. Kukreja's Farm at Panchigujran, Panipat, Haryana . Cost 4.5 milliion.
- 6.14 Mr. Ajit Singh Bhandari's Farm at Bijwasan, New Delhi. Estimated Cost Rs. 4.5 million.
- 6.15 Mr. P.S. Bedi's farm at Sainik Farm, New Delhi. Cost Rs. 3.0 million.
- 6.16 Dr. Kumar's Farm at Farukhnagar, Gurgaon. Cost Rs. 1.5 million.
- 6.17 Mr. Rana's Farm at Bijwasan, New Delhi. Cost Rs. 2.5 million.

6.18 Gyan Pravah, Samne Ghat, Varanasi. Cost Rs. 3.0 million.



6.19 Mr. Lalit Aggarwal's Farm at Bijwasan, New Delhi. Cost Rs. 3.5 million.

6.20 Mr. Bhasin's Farm at Kapashera, New Delhi. Cost Rs. 4.5 million.

6.21 Mr. Sunil Galgotia's Farm at Village Bilaspur, (Haryana). Cost Rs. 3.5 million.

6.22 M/s. Amarpali International Farm at Chattarpur, New Delhi. Cost Rs. 3.5 million.

6.23 Mr. Anil Goyal's Farm at Jaipur Highway. Cost Rs. 4.0 million.

6.24 Mr. Arjun Kriplani's Farm at DLF Chattarpur, New Delhi. Cost Rs. 2.5 million.

6.25 Mr. R.K. Bhatia's Farm at village Bhaktawarpur, Palla Road, New Delhi. Cost Rs. 4.5 million.

6.26 Mr. Pradeep Aggarwal's Farm at Sainik Farm, New Delhi.

6.27 Mr. R.P. Eshwaran's Farm at Dehradun (Uttaranchal).

6.28 Mr. Suresh Neotia's Bungalow at GK.1, with architect Uppal Ghosh.



- 6.29 Cairn Project (Residential Complex for Shri Ratan Tata in 1.20 acres of land) at Mumbai designed by architect Shri Charles Correa for Tata Housing Development Ltd.



- 6.30 Rajender Mohan's Bungalow at 120, Golf Links, New Delhi.
- 6.31 Mr. Sunil Galgotia's Residence at DLF, Gurgaon.
- 6.32 Mr. Sunil Gupta's Residence at Nehru Nagar, Ghaziabad.
- 6.33 Residential apartments with terrace garden at C-5/5, Vasant Vihar, New Delhi for M/s. Sanskar Homes Pvt. Ltd., New Delhi.
- 6.34 Deepak Kapoor's Terrace Garden at 23, Golf Links, New Delhi

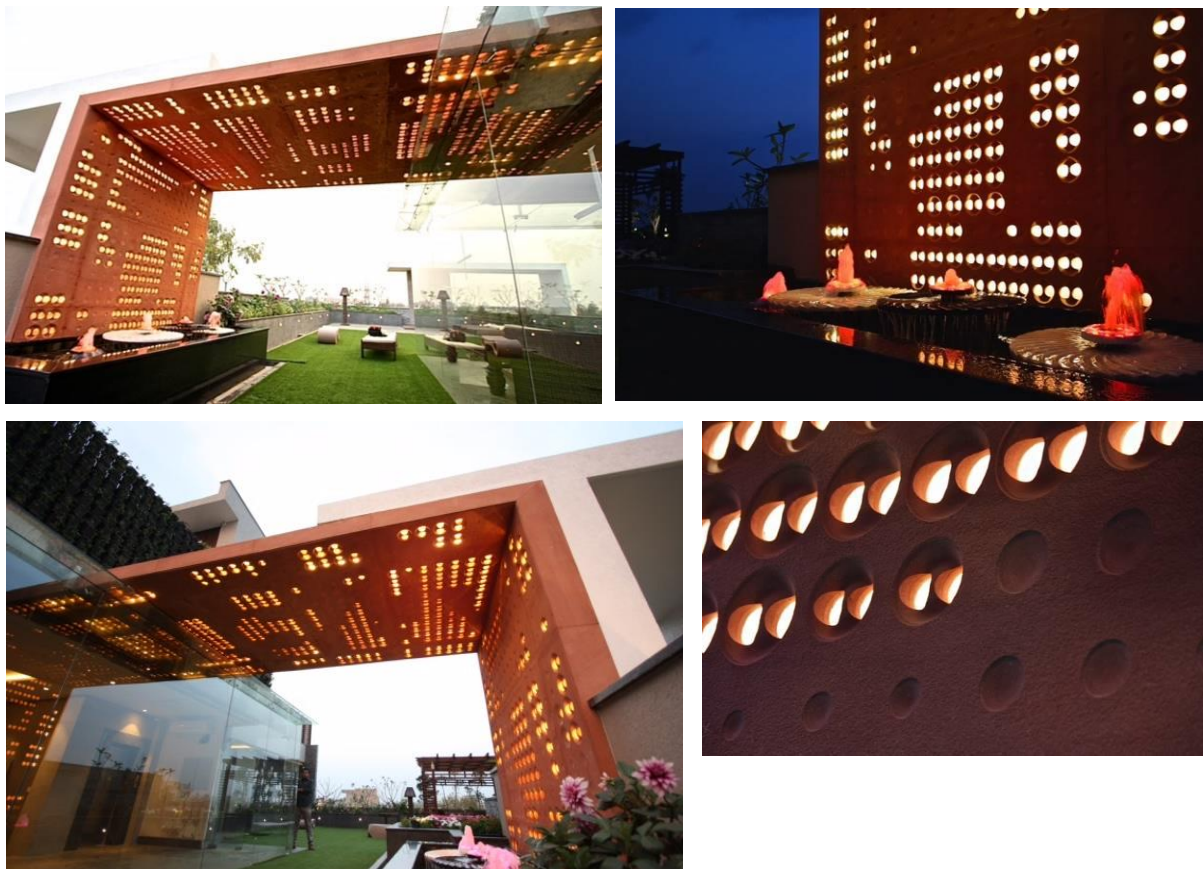


- 6.35 Mr. Rastogi's Residence at Shanti Niketan, New Delhi. – upto concept stage only.
- 6.36 Mr. Chopra's Residence at Panchsheel Park, New Delhi.
- 6.37 Mr. Amarjeet's Residence at Dehradun.
- 6.38 Mr. Sunil Bhalla's (Co-Founder & Director LAVA International Ltd. Noida) Farm House at Kapashera, Delhi.
- 6.39 Mr. Ashok Gupta's (Managing Director, Ajnara Group) Farm House at Noida. – **ongoing project.**
- 6.40 Mr. Ashok Gupta's (Managing Director, Ajnara Group) Residence at Defence Enclave, Delhi.
- 6.41 Mr. Kaushal Jain's (Managing Director, Arihant Group) Residence at Yojna Vihar, Delhi – **ongoing project.**

- 6.42 Mr. Gulshan Nagpal's (Managing Director, Gulshan Homz Group) Residence at Swasthya Vihar, Delhi.



- 6.43 Mr. Rajeev Aggarwal's Residence at B-9, Vivek Vihar, Delhi.



- 6.44 Urbana Villa at Kolkata in 1.0 acre of land for Mr. Vedant Sureka design by Saota Architects, South Africa – **ongoing project.**

- 6.45 Mr. Harshvardhan Neotia's (Managing Director, Ambuja Group) Residence at Greater Kailash, New Delhi.

- 6.46 Mr. J.K. Jain's (Managing Director, DASNAC Group) Residence at Hanuman Road, New Delhi – **ongoing project.**

- 6.47 Mr. Gaurav Dhall's (Managing Director, TIC Events Group) Residence at Vasant Vihar, Delhi – **ongoing project.**

## 7.0 HOUSING COMPLEXES & TOWNSHIPS

- 7.1 Tata's Officers Housing at Jamshedpur. Cost Rs. 3.5 million.
- 7.2 TV GRAM Housing at Mathura, (U.P.) Cost Rs. 3.0 million.
- 7.3 Housing society in Bareta, Punjab, including Site Planning , Architecture and Landscaping of the society.
- 7.4 'Urvashi Complex' – A residential neighbourhood at Durgapur in 94 acres of land for Bengal Ambuja Housing Development Ltd. (BAHDL) conceived by Shri Balkrishana Doshi from Vastu Shilpa Consultants, Ahmedabad.
- 7.5 'Ulhas'– A mini-township at Bardhaman in 94 acres of land for Bengal Ambuja Housing Development Ltd. (BAHDL) conceived by Shri Balkrishana Doshi from Vastu Shilpa Consultants, Ahmedabad.
- 7.6 Utsa 'The Condoville' - A housing project at New Town, Kolkata in 5 acres of land for Bengal Ambuja Housing Development Ltd. (BAHDL) conceived by Shri Prabir Mitra Kolkata.
- 7.7 Arihant Residency (Group Housing at Plot No. 2), Indirapuram, Ghaziabad.
- 7.8 Nirmal Ashram at Khairi Kalan, Rishikesh with architect Moti Bahri.
- 7.9 Dream city Project at Amritsar in 150 acres of land for AIPL- Ambuja Housing Urban Infrastructure Ltd. designed by M/s. Hafeez Contractor, Mumbai – **ongoing project**.
- 7.10 Bengal Ambuja Housing Development Ltd. (BAHDL) prestigious Housing Project 'Udayan-The Condoville' at Kolkata in 26 acres of land conceived by Shri Balkrishana Doshi from Vastu Shilpa Consultants, Ahmedabad.



- 7.11 Prateek Fedora housing at Noida, UP in 2.30 acres of land for Prateek Realtors India (P) Ltd. designed by Deepak Mehta & Associates, New Delhi.

7.12 Siliguri Housing and Hotel in 11.0 acres of land for Beekay Automobile Pvt. Ltd. designed by Architects Ravish Mehra Deepak Kalra, New Delhi.

7.13 'Upohar'– A Housing Complex at Chawkgaria, Kolkata in 18.62 acres of land for Bengal Ambuja Housing Development Ltd. (BAHDL) conceived by Shri Balkrishana Doshi from Vastu Shilpa Consultants, Ahmedabad.



7.14 Designarch Gardenia E-homes housing at Vaishali, Ghaziabad in 1.5 acres of land & E-homes housing at Greater Noida, UP in 3.83 acres of land for Designarch Infrastructure Private Limited, conceived by architect Mr. J.K. Jain, New Delhi.

7.15 Exotica East Square Housing at Indirapuram, Ghaziabad in 2.32 of land for Exotica Developers.

7.16 The Residency City Centre at Salt Lake, Kolkata in 1.8 acres of land designed by architect Charles Correa for Bengal Ambuja Metro Development Limited, Kolkata.



7.17 'Ujjwala' – A Housing Complex at New Town, Kolkata in 5 acres of land for Bengal Ambuja Housing Development Ltd. (BAHDL) conceived by architect Mr. Kapil Bhalla from SEARCH, Mumbai.



- 7.18 'Ujaas'– A Housing Complex at Lake Town, Kolkata in 5 acres of land for Designer Real Estate Pvt. Ltd. (DREPL), Kolkata designed by Inscape, Ahmedabad.



- 7.20 Residential Colony at Farakka, Distt. Murshidabad, West Bengal in 4.75 acres of land for Ambuja Cements Limited designed by Architects Salient, Kolkata.
- 7.21 Ajnara Gen-X housing at Crossing Republic, Ghaziabad in 6.0 acres of land including Architecture & Interior of Club Building (area 15,000 sqft.) for Ajnara India Limited designed by Space Designers, Ghaziabad, UP.
- 7.22 Exotica Elegance Housing at Indirapuram, Ghaziabad in 3.68 acres of land for Exotica Developers designed by Deepak Mehta & Associates, New Delhi.
- 7.23 Exotica Dreamville Housing at Noida, UP in 10.0 acres of land for Exotica Housing & Infrastructure Co. Pvt. Ltd. , New Delhi designed by Architect Naveen Vij, New Delhi.
- 7.24 Group Housing at Plot no. 4, Vasant Kunj, New Delhi in 3.68 acres of land for Maharishi Dayanand Co-op Group Housing Society Ltd. designed by Khurmi Associates (P) Ltd., New Delhi – concept stage only.
- 7.25 Forum Pravesh Housing, Belur, Kolkata in 8.3 acres of land for Forum Riveria Construction Pvt. Ltd., Kolkata designed by Agrawal & Agrawal Associates, Kolkata.

- 7.26 Prateek Wisteria housing at Noida, UP in 15.0 acres of land for Prateek Realtors India (P) Ltd. designed by Deepak Mehta & Associates, New Delhi.





7.27 Prateek Laurel housing at Noida, UP in 12 acres of land for Prateek Bultech (P) Ltd. Designed by Deepak Mehta & Associates, New Delhi.

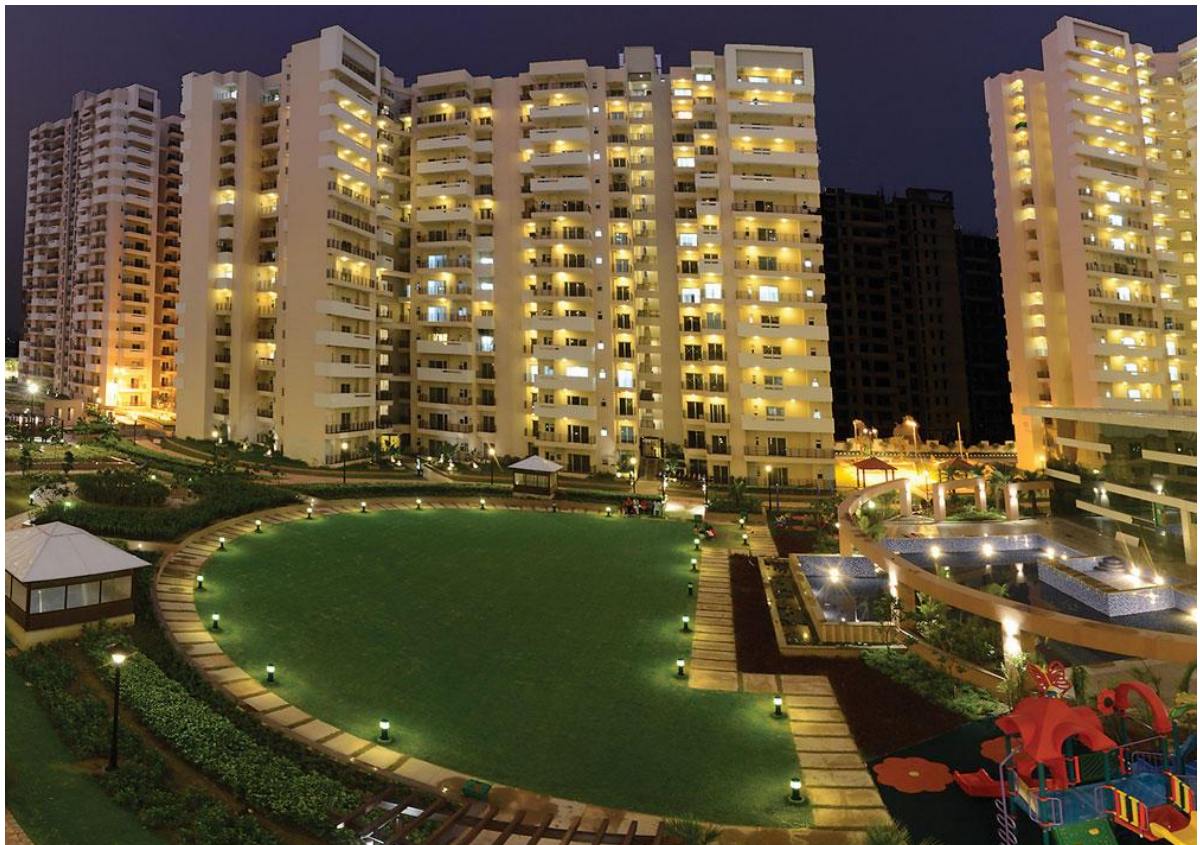


7.28 Prateek Stylome housing at Noida, UP in 7.44 acres of land for Prateek Realtors India (P) Ltd. designed by Deepak Mehta & Associates, New Delhi.



7.29 Harshit Icon City, Housing at Raipur, Chattisgarh in 50.0 acres of land for Singhania Buildcon Pvt. Ltd. Site planning & landscaping by Singal Associates, New Delhi.

7.30 Exotica Fresco Housing at Noida, UP in 7.00 acres of land for Exotica Developers designed by Deepak Mehta & Associates, New Delhi.



7.31 Gulshan Bellina housing at Greater Noida, UP in 7.0 acres of land for Gulshan Homz Group designed by Deepak Mehta & Associates, New Delhi – **ongoing project.**

7.32 Victory Crossroads Residential Complex at Expressway, Noida in 2.50 acres of land for GSS Procon Private Limited, New Delhi designed by Deepak Mehta & Associates, New Delhi.

- 7.33 Gulshan Ikebana housing at Noida Expressway, UP in 12.5 acres of land for Gulshan Homz Group designed by Deepak Mehta & Associates, New Delhi.



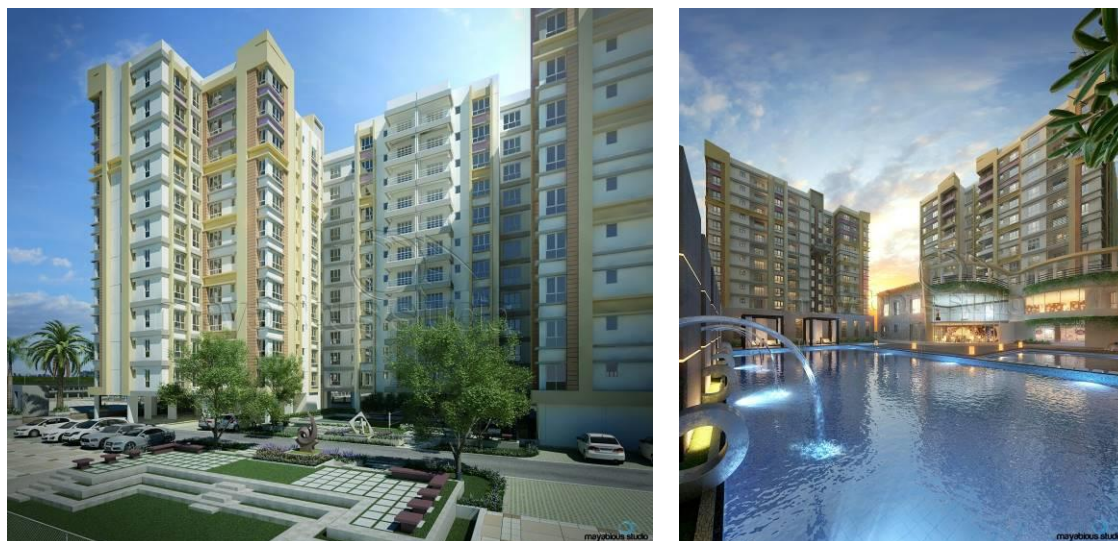
- 7.34 Ajnara Le-Garden Residential Complex at Greater Noida, UP in 18.00 acres of land for Ajnara Realtech Limited, Noida designed by Space Designers, Ghaziabad, UP – **ongoing project.**



- 7.35 Imperial County Township at Yamuna Expressway, Noida in 100 acres of land for HC Infracity Pvt. Ltd., New Delhi designed by Deepak Mehta & Associates, New Delhi – **ongoing project.**



- 7.36 Srijan Residential Complex at Manikpur, Kolkata in 11.57 acres of land for Srijan Manik Developers, Kolkata designed by Agrawal & Agrawal Associates, Kolkata – **ongoing project.**



- 7.37 Srijan Residential Complex at Kumrakhali, Kolkata in 5.35 acres of land for P.S. Srijan Height Developers, Kolkata designed by Agrawal & Agrawal Associates, Kolkata.
- 7.38 Max Royal Residential Complex at Noida, UP in 5.00 acres of land for Sethi Buildwell Pvt. Ltd. Developers, Ghaziabad designed by Deepak Mehta & Associates, New Delhi.
- 7.30 Ashiana Homes Royal Lagoon, Bhubaneswar in 8.0 acres of land for Ashiana Homes Pvt. Ltd. designed by Kolkata based Architects M/s Innate – **ongoing project.**
- 7.31 Skytech Matrott housing at Noida, UP in 5.0 acres of land for Skytech Group designed by Deepak Mehta & Associates, New Delhi.
- 7.39 Gaurcity 1 Township at Greater Noida, UP in 125.00 acres of land for Gaursons Hi-Tech Infrastructure Pvt. Ltd., Noida designed by RSP Singapore.
- 7.40 Geotech Homz Residential Complex at Noida Extension, Greater Noida in 2.50 acres of land for Geotech Homz Pvt. Ltd, Ghaziabad designed by Deepak Mehta & Associates, New Delhi.
- 7.41 GC-12 Housing at Gaurcity 2 Township at Greater Noida, UP in 5.00 acres of land for Gaursons Promoters Pvt. Ltd., Noida.
- 7.42 JM Orchid Residential Complex at Noida in 5.00 acres of land for JM Housing Ltd, Noida designed by Deepak Mehta & Associates, New Delhi.
- 7.43 JM Aroma Residential Complex at Noida in 5.00 acres of land for JM Infratech Pvt. Ltd, Noida designed by Deepak Mehta & Associates, New Delhi.
- 7.44 Designarch Jewels housing at Noida in 7.00 acres of land for E-Homes Infrastructure Private Limited, conceived by architect Mr. J.K. Jain, New Delhi. – **ongoing project.**

- 7.45 Sunvalley Residential Complex at Gwalior in 11.00 acres of land designed by Deepak Mehta & Associates, New Delhi – **ongoing project.**



- 7.46 Saviour Park Housing at Ghaziabad in 8.50 acres of land for M/s SAVFAB Buildtech Pvt. Ltd. designed by M/s Deepak Mehta & Associates, New Delhi – **ongoing project.**
- 7.47 Saviour Green Arch Housing at Greater Noida in 10.50 acres of land for M/s New Way Homes Pvt. Ltd. designed by M/s. Hafeez Contractor, Mumbai – **ongoing project.**
- 7.48 Aarcity Regency Park Housing at Hissar in 10.50 acres of land for M/s Aarcity Builders Pvt. Ltd. designed by M/s. Deepak Mehta & Associates, New Delhi – **ongoing project.**
- 7.49 Rudra Palace Heights Housing at Greater Noida in 8.28 acres of land for M/s Rudra Buildwell Projects Pvt. Ltd. designed by M/s Deepak Mehta & Associates, New Delhi – **concept stage only.**
- 7.50 Tashee Capital Gateway Housing at Gurgaon in 9.62 acres of land for M/s KNS Infracon Pvt. Ltd. designed by M/s. Deepak Mehta & Associates, New Delhi – **ongoing project.**
- 7.51 Uttara Township at Siliguri in 128.56 acres of land for M/s Luxmi Portfolio Limited designed by M/s. Morphogenesis Architectural Studio, New Delhi – **concept stage only.**
- 7.52 'Utalika' – A Housing Complex at Mukundapur, Kolkata in 20 acres of land for Ambuja Realty Kolkata conceived by architect Mr. Kapil Bhalla from SEARCH, Mumbai – **ongoing project.**



- 7.53 Fusion Homes Housing at Greater Noida (W) in 9.0 acres of land for M/s Fusion Buildtech Pvt. Ltd. designed by M/s Deepak Mehta & Associates, New Delhi – **ongoing project.**
- 7.54 Arihant Arden Housing at Greater Noida in 9.73 acres of land for M/s Arihant Buildcon Pvt. Ltd. designed by M/s Deepak Mehta & Associates, New Delhi.
- 7.55 Arihant South Winds Housing at Faridabad in 1.60 acres of land for M/s Arihant Infra Realtors Pvt. Ltd. designed by M/s Deepak Mehta & Associates, New Delhi – **ongoing project.**



- 7.56 S.G. Homes Housing at Vasundhra, Ghaziabad in 2.50 acres of land for M/s S.G. Estate Ltd. designed by M/s Deepak Mehta & Associates, New Delhi.
- 7.57 Nirala Estate Housing at Greater Noida in 25.0 acres of land for M/s Nirala Infratech Pvt. Ltd. designed by M/s Deepak Mehta & Associates, New Delhi – **ongoing project.**
- 7.58 Newtech La Palacia Housing at Greater Noida (W) in 3.08 acres of land designed by M/s Deepak Mehta & Associates, New Delhi – **ongoing project.**
- 7.59 Prudent Prana Housing at Kolkata in 2.70 acres of land for M/s Prudent Infra Realty Pvt. designed by M/s Innate, Kolkata.
- 7.60 Emerald Green Residential Complex at Gwalior in 14.52 acres of land for M/s H.G. Infratech Pvt. Ltd. designed by Pathak Associates, Gwalior – **ongoing project.**
- 7.61 Arihant Amber Housing at Greater Noida in 3.50 acres of land for M/s Citycon Buildwell Pvt. Ltd. designed by M/s Deepak Mehta & Associates, New Delhi.



- 7.62 Dwarkadhish Casa Romana Housing at Dharuhera in 15.25 acres of land for M/s Dwarkadhish Projects Pvt. Ltd. designed by M/s Deepak Mehta & Associates, New Delhi – **ongoing project.**



- 7.63 Supercity Mayfair Residency at Greater Noida in 6.0 acres of land for M/s Supercity Developers Pvt. Ltd. designed by M/s Deepak Mehta & Associates, New Delhi – **ongoing project.**

- 7.64 Primarc Canopy Housing at Mankundu, Kolkata in 4.65 acres of land for M/s Primarc Projects Pvt. Ltd. designed by M/s Maheswari & Associates, Kolkata – **ongoing project.**

- 7.65 Samridhi Garnd Avenue Housing at Greater Noida in 7.0 acres of land for M/s Samridhi Realty Homes Pvt. Ltd. designed by M/s Deepak Mehta & Associates, New Delhi – **ongoing project.**



- 7.66 Max Bliss White House Housing at Noida in 5.0 acres of land for M/s Maxblis Construction Pvt. Ltd. designed by M/s Deepak Mehta & Associates, New Delhi – **ongoing project.**

7.67 French Apartments Housing at Greater Noida in 6.25 acres of land for M/s Antham Infrastructure (P) Ltd. designed by M/s Deepak Mehta & Associates, New Delhi – **ongoing project.**

7.68 Manglam Rangoli Greens Housing at Jaipur in 5.50 acres of land for M/s Manglam Build-Developers Limited, Jaipur designed by M/s Gian P Mathur & Associates Private Limited, New Delhi.

7.69 Uninav Heights Housing at Raj Nagar Extension in 5.3 acres of land for M/s Uninav Developers Pvt. Ltd, Delhi designed by M/s APS Greens Architects & Associates, Ghaziabad.

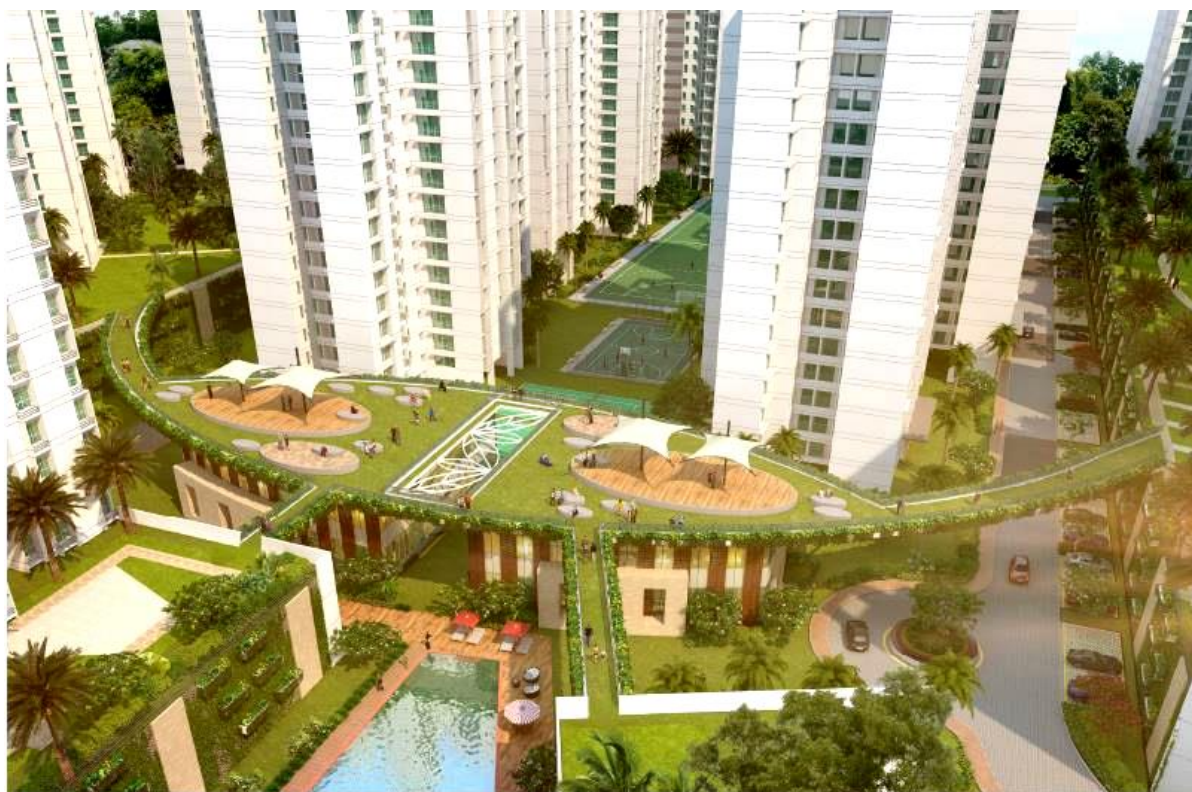
7.70 ARG Mapple Leaf Housing at Jaipur in 2.70 acres of land for M/s ARG Developers Pvt. Ltd., Jaipur designed by M/s Gian P Mathur & Associates Private Limited, New Delhi.

7.71 Gold Souk Golf Links Township at Sohna Road, Gurgaon in 200.0 acres of land for M/s Aerens Gold Souk International Limited, Gurgaon designed by M/s. Swanbury Penglase Architects, Australia & M/s. Design Creations, Gurgaon – **ongoing project.**





- 7.72 Coral Nimrana City Housing at Neemrana in 8.0 acres of land for M/s Coral Group, Jaipur designed by M/s Shekhawat & Associates Architects Pvt. Ltd., Jaipur – **ongoing project.**
- 7.73 Aarcity Regency Park Housing at Hissar in 5.0 acres of land for M/s Aarcity Builders Pvt. Ltd. designed by M/s. Hafeez Contractor, Mumbai – **ongoing project.**
- 7.74 Mahaluxmi Green Mansion Housing at Greater Noida West in 2.90 acres of land for M/s Mahaluxmi Buildtech Pvt. Ltd. designed by M/s. Space Designers, Noida.
- 7.75 Sagar Paradise Housing at Gwalior in 2.30 acres of land for M/s Sagar Dwellings Pvt Ltd. designed by Architect Praveen Jain, Gwalior.
- 7.76 Metrocity Housing at Lucknow in 5.0 acres of land for M/s Arif Industries Pvt. Ltd., Lucknow.
- 7.77 Amaatra Avaasa Housing at Yamuna Expressway in 5.03 acres of land designed by M/s Deepak Mehta & Associates, New Delhi – **ongoing project.**
- 7.78 S.G. Grand Housing at Raj Nagar Extension, Ghaziabad in 5.0 acres of land for M/s S.G. Estate Ltd. designed by M/s Deepak Mehta & Associates, New Delhi – **ongoing project.**
- 7.79 Tata Alipore Housing at Kolkata in 2.77 acres of land for M/s Tata Housing Development Co. Ltd designed by M/s PLP Architecture Ltd., London.
- 7.80 Tata Adwita Housing at Kolkata in 25.0 acres of land for M/s Ujjwal Barter Private Limited, Kolkata designed by M/s Kapadia Associates, Mumbai & M/s. Innate, Kolkata.



- 7.81 Amaatra Homes Housing at Greater Noida in 5.00 acres of land for Ms. Nandi Infratech Private Ltd, Noida designed by M/s Deepak Mehta & Associates, New Delhi – **ongoing project.**

7.82 Aarcity Sportcity Housing at Greater Noida in 25 acres of land for M/s Aura Buildwell Private Limited, Delhi designed by M/s. Hafeez Contractor, Mumbai – **ongoing project.**

7.83 Unimark Residential Complex at Patauli Kolkata in 2.65 acres of land for M/s Unimark Group designed by M/s Maheswari & Associates, Kolkata – **ongoing project.**



7.84 Royal Habitat Housing at Bhubaneswar in 7.0 acres of land for M/s S.J. Developers & Housing Pvt. Ltd., Bhubaneswar designed by M/s. Innate, Kolkata – **ongoing project.**

7.85 Samridhi Luxuriya Avenue Housing at Greater Noida in 10.0 acres of land for M/s Samridhi Infra Square Private Limited designed by M/s Deepak Mehta & Associates, New Delhi – **ongoing project.**

7.86 Ashiana Greens Housing at Jaipur in 9.48 acres of land for M/s The Green Triveni Developers designed by M/s Tushar Sogani Designs Pvt. Ltd. – **ongoing project.**

7.87 Annapurna Grandeur Housing at Banaras in 1.80 acres of land for M/s Shree Annapurna Homes.

7.88 Unimark Residential Complex at Barasat Kolkata in 9.82 acres of land for M/s Unimark Group designed by M/s Subir Kumar Basu, Kolkata – **ongoing project.**

7.89 Arihant Abode Housing at Greater Noida in 5.0 acres of land for M/s Arihant Buildcon Pvt. Ltd. designed by M/s Deepak Mehta & Associates, New Delhi – **ongoing project.**

7.90 Unimark Residential Complex at Kalikapur Kolkata in 3.29 acres of land for M/s Unimark Group designed by M/s Subir Kumar Basu, Kolkata – **ongoing project.**

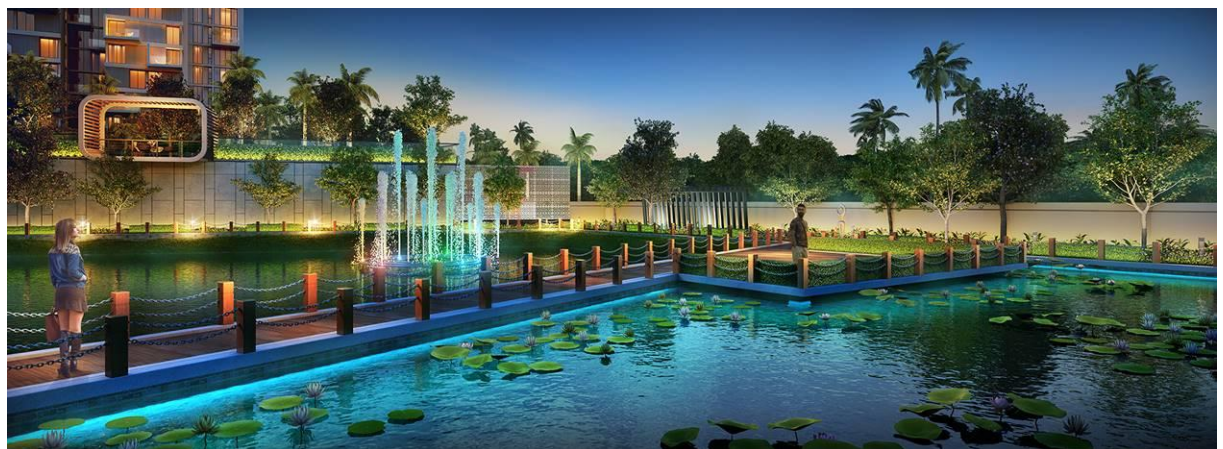
7.91 Migsun Ultimo Housing at Greater Noida West in 6.20 acres of land for M/s Mahaluxmi Infrahome Pvt. Ltd designed by M/s. Design Forum International, Delhi – **ongoing project.**

7.92 Gaursons Siddharthum Housing at Siddhartha Vihar, UP in 12.00 acres of land for Gaursons India Ltd, Noida – **ongoing project.**

- 7.93 Gulshan Botnia housing at Noida, UP in 5.31 acres of land for Gulshan Homz Group designed by Deepak Mehta & Associates, New Delhi – **ongoing project.**



- 7.94 Merlin The One Residential Complex at Kolkata in 3.42 acres of land for M/s Merlin Projects Limited, Kolkata designed by M/s. Innate, Kolkata – **ongoing project.**



- 7.95 Max Bliss Taj Wellington Housing at Noida in 1.75 acres of land for M/s Maxblis Construction Pvt. Ltd. designed by M/s Deepak Mehta & Associates, New Delhi – **ongoing project.**

- 7.96 Primarc Aangan Housing at Kolkata in 1.45 acres of land for M/s Primarc Shrachi Projects LLP designed by M/s Raj Agrawal & Associates, Kolkata.
- 7.97 Elite Golf Greens Housing at Noida in 6.17 acres of land for Elite Homz Group designed by M/s N + U Design Studio, New Delhi – **ongoing project.**
- 7.98 Uddipa Residential Complex at Kolkata in 2.39 acres of land for M/s Overflow Tradelink Pvt. Ltd., Kolkata designed by M/s. Innate, Kolkata – **ongoing project.**



- 7.99 Ambay Gateway Housing at Kolkata in 3.0 acres of land designed by M/s Amber Creations, Kolkata – **ongoing project.**
- 7.100 Charms Castle Housing at Raj Nagar Extension in 9.65 acres of land for M/s Charms India Pvt. Ltd. designed by M/s. Space Designers, Noida – **ongoing project.**
- 7.101 Solitaire Valley Township at Allahabad in 200.0 acres of land for M/s The Innovators Digital Ads Pvt. Ltd., Allahabad designed by M/s Deepak Mehta & Associates, New Delhi – **ongoing project.**
- 7.102 Olympia Residential Complex at Gwalior in 20.0 acres of land designed by Pathak Associates, Gwalior – **ongoing project.**
- 7.103 Shrachi Greenwood Nest Housing at Kolkata in 4.50 acres of land for M/s Bengal Shrachi Housing Development Limited, Kolkata designed by M/s. Innate, Kolkata – **ongoing project.**
- 7.104 Sri Avani Housing at Kolkata in 1.50 acres of land for M/s Avani Developers Private Limited, Limited, Kolkata designed by M/s. Amber Creation Architects, Kolkata – **ongoing project.**
- 7.105 GC-7 Housing at Gaurcity 1 Township at Greater Noida, UP in 9.25 acres of land for Gaursons Gaursons Hi-Tech Infrastructure Pvt Ltd, Ghaziabad – **ongoing project.**

- 7.106 Shri Radha Gulmohar Township at Mathura in 42.0 acres of land for M/s SJP Global Limited, Noida designed by M/s Confluence Architects, New Delhi.



- 7.107 Migsun Kiaan Housing at Vasundhara, Ghaziabad in 1.62 acres of land for M/s Mahaluxmi Buildtech Consortium Pvt. Ltd., designed by M/s. Space Designers, Noida – **ongoing project.**
- 7.108 Cosmo Ananda Township at Gwalior in 25 acres of land for M/s. Sapphire Infratech, designed by M/s. Pathak Associates, Gwalior – **ongoing project.**
- 7.109 Sikka Kaamna Greens Housing at Noida, UP in 12.25 acres of land for M/s. Sikka Group, designed by M/s. RT & Associates Pvt. Ltd, Noida– **ongoing project.**
- 7.110 Sikka Karnam Greens Housing at Noida, UP in 9 acres of land for M/s. Sikka Group, designed by M/s. Arch10, Gurugram – **ongoing project.**
- 7.111 Tashee Orion Galaxy Group Housing at Gurugram in 12.3 acres of land for M/s Soni Infratech Pvt. Ltd., Gurugram designed by M/s Deepak Mehta & Associates, New Delhi – **ongoing project.**
- 7.112 Saya S Class Housing at Ghaziabad in 2.0 acres approx. of land for M/s Roseberry Developers Pvt. Ltd., Ghaziabad designed by M/s Architect Hafeez Contractor, Mumbai – **ongoing project.**



- 7.113 Alcove Residential Complex at Kolkata, West Bengal in 27 acres of land for M/s. Alcove Developers LLP, designed by M/s. Architect Hafeez Contractor, Mumbai & M/s. Innate, Kolkata— **ongoing project.**



- 7.114 Saya Gold Avenue Housing at Ghaziabad in 5.0 acres of land for M/s Saya Homes Pvt. Ltd., Ghaziabad designed by M/s Architect Hafeez Contractor, Mumbai – **ongoing project.**
- 7.115 Gaur's 4<sup>th</sup> Park View Housing in 6.60 acres of land for M/s Gaursons Realtech Pvt. Ltd, Ghaziabad designed by M/s Brij (India) Architects, Delhi – **ongoing project.**
- 7.116 Merlin X Housing at Kolkata in 2.5 acres of land for M/s Merlin Group of Companies, Kolkata designed by M/s Aruden Consultancy Services, Kolkata— **ongoing project.**

7.117 Sugam Diamond Morya Housing at Kolkata in 5.25 acres of land for M/s Sugam Diamond Abasan LLP, Kolkata designed by M/s Innate, Kolkata– **ongoing project.**



7.118 Gayatri Aura Housing at Greater Noida in 8.90 acres of land for M/s Hans Infra Projects, Noida designed by M/s Space Designers Internationals, Noida– **ongoing project.**



7.119 Nucleus City Housing at Ranchi in 2.65 acres of land for M/s Chalice Real Estate LLP, Ranchi designed by M/s Confluence Architects, Delhi– **ongoing project.**



7.120 Nilaya Green Housing at Raj Nagar Extension in 10.0 acres of land for M/s Nilaya Infra (P) Ltd, Ghaziabad designed by M/s Space Designers Internationals, Noida– **ongoing project.**

7.121 Gulshan Dynasty Housing in 5.0 acres of land for M/s Gulshan Homz, Delhi designed by M/s Confluence Architects, Delhi– **ongoing project.**



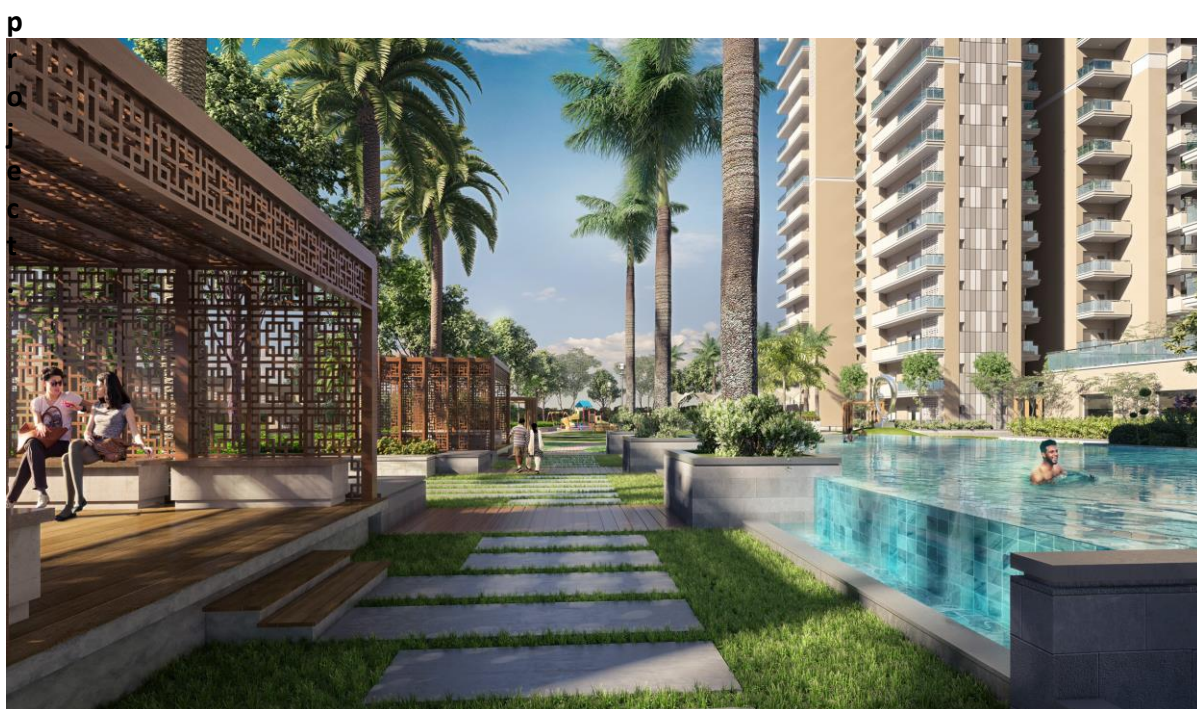


- 7.122 Signature Sattva Housing in 27.0 acres of land for M/s Signature Sattva Infra Technology Pvt. Ltd., Gurugram designed by M/s Architect Hafeez Contractor, Mumbai– **ongoing project.**



- 7.123 Logix Neoworld Housing in Sector 150, Noida in 6.0 acres of land for M/s Logix Infra Developers Pvt. Ltd. designed by M/s Confluence, New Delhi – **ongoing project.**
- 7.124 Alphacorp Eminence Housing in Sector 150, Noida in 6.20 acres of land for M/s Alpha Corp Development Pvt. Ltd., Gurugram designed by M/s Deepak Mehta & Associates, New Delhi – **ongoing project.**
- 7.125 Signature Global Housing at Sector 95, Gurugram in 5.1 acres of land for M/s Signature Infrabuild Private Limited Signature Global (India) Pvt. Ltd., Gurugram designed by M/s Architect Hafeez Contractor, Mumbai – **ongoing project.**
- 7.126 Signature Global Grand Eva Housing at Sector 103, Gurugram in 9.0 acres of land for M/s JMK Holdings Pvt. Ltd., Gurugram designed by M/s Architect Hafeez Contractor, Mumbai – **ongoing project.**
- 7.127 Signature Global Housing at Sector 63A, Gurugram in 10.0 acres of land for M/s Signature Global (India) Pvt. Ltd., Gurugram designed by M/s Architect Hafeez Contractor, Mumbai – **ongoing project.**
- 7.128 Signature Global Housing at Sector 79, Gurugram in 6.60 acres of land for M/s Signature Global (India) Pvt. Ltd., Gurugram designed by M/s Architect Hafeez Contractor, Mumbai – **ongoing project.**
- 7.129 Signature Global Housing at Sector 93, Gurugram in 10.0 acres of land for M/s Signature Global (India) Pvt. Ltd., Gurugram designed by M/s Architect Hafeez Contractor, Mumbai – **ongoing project.**
- 7.130 Signature Global Housing at Sector 95A, Gurugram in 10.0 acres of land for M/s Signature Global (India) Pvt. Ltd., Gurugram designed by M/s Deepak Mehta & Associates, New Delhi – **ongoing project.**

- 7.131 Signature Global Housing at Sector 89, Gurugram in 9.73 acres of land for M/s Signature Global (India) Pvt. Ltd., Gurugram designed by M/s R.K. Associates, New Delhi – **ongoing project.**
- 7.132 Signature Global Park Plotted Development at Sector 36, Sohna, Gurugram in 25.53 acres of land for M/s Signature Global (India) Pvt. Ltd., Gurugram designed by M/s Architect Hafeez Contractor, Mumbai – **ongoing project.**
- 7.133 Shapoorji Pallonji Residential Complex at New Town, Kolkata in 4.15 acres of land for M/s Bengal Shapoorji Housing Development Pvt. Limited, Kolkata designed by M/s SBA Spectra Consultants Pvt. Ltd., Kolkata – **ongoing project.**
- 7.134 SKA Housing at Sector 143, Noida in 3.33 acres of land for M/s SKA Developers Pvt. Ltd., Noida designed by M/s Architect Hafeez Contractor, Mumbai – **ongoing project.**
- 7.135 SKA Divya Towers Housing at Greater Noida in 3.36 acres of land for M/s SKA Developers Pvt. Ltd., Noida designed by M/s A Plus Design Associates, Noida - **ongoing project.**
- 7.136 Ratan Pearls IIPL Housing at Greater Noida in 2.50 acres of land for M/s Irish Infrastructure Private Limited, Greater Noida designed by M/s A Plus Design Associates, Noida - **ongoing**



- 7.137 'Usshar' – A River Side Residential Complex at Kolkata in 8.37 acres of land for Hiland Group Kolkata conceived by M/s. MNC. One, Kolkata – **ongoing project.**
- 7.138 HG Nirvana Homes Plotted Development at Gwalior in 11.76 acres of land for HG Group Gwalior conceived by M/s. Scientists Architects, Gwalior – **ongoing project.**
- 7.139 Uninav Bliss Housing at Raj Nagar Extension in 3.90 acres of land for Uninav Group conceived by M/s. Anuj Aggarwal Architects, Ghaziabad – **ongoing project.**
- 7.140 Blue Lotus Le Grandiose Plotted Development at Gwalior in 16.50 acres of land for Blue Lotus Developers conceived by M/s. Singal Associates, New Delhi – **ongoing project.**

## 8.0 HOTELS & RESORTS

- 8.1 Hotel Soaltee Oberoi (Five Star), Kathmandu, Nepal designed by architects M/S Arvind Gupta Associates, New Delhi. – additions and alterations.
- 8.2 Orbit Hotel (Five Star) Nagpur – Competition project.
- 8.3 Hotel at Bikaner for Cross Country Hotels Ltd., New Delhi. Cost Rs. 12.5 million.
- 8.4 Heritage Resort for Cross Country Hotels Ltd., at Mukandgarh, Fort, Rajasthan. Cost Rs. 3.5 million.
- 8.5 Beach Resort for Cross Country Hotels Ltd., New Delhi at Goa. Cost Rs. 17.5 million - Concept stage only.
- 8.6 Dalmia Resorts International, Covelossim Beach, Goa. Cost Rs. 7.5 million.
- 8.7 Laguna for Concept Caterers & Restaurant (P) Ltd., New Delhi (Opposite Late Smt. Indira Gandhi's Farm). Cost Rs. 2.5 million.
- 8.8 Resort at Kasola, Bawal, Haryana (Area 17 acres).
- 8.9 Banquet facility at Ghaziabad, U.P (area 2 acres).
- 8.10 Regale Inn – Guest house at A2 Chittranjan Park, New Delhi.
- 8.11 Club 26 at E1 Sector-26. Noida (U.P.)
- 8.12 Hotel Stadel at Salt Lake, Kolkata for Samcon Resort & Hotel (P) Ltd.
- 8.13 D.S. Motel with Banquet facilities in 2.0 acres of land at Nangli Poona, Delhi.
- 8.14 Chakra View Revolving Restaurant at Khajuri in 3 acres of land for DRS Group.
- 8.15 Kanatal Resort at Chamba Mussoorie Road, Kanatal, Uttarakhand (Area 1.75 acres).
- 8.16 Hotel ITC Welcome - Five Star Hotel & Spa at Sec-10, Dwarka, Delhi.
- 8.17 Hotel Sheraton at CBD Shahdara, Delhi (worked up to concept stage).
- 8.18 Nathani's Resort at Jollygrant, Dehradun (Area 1.00 acre) designed by Trijya Design Studio, Dehradun – **ongoing project.**
- 8.19 Birpur Resort at Jammu in 4.80 acres of land for M/s. Four A Hotels & Resorts – **ongoing project.**
- 8.20 Banquet facilities at Sh. Sant Lal Farm at Bikoli, Delhi in 3.5 acres of site area.
- 8.21 Galgotia's Bay Hotel at Gurgaon.

8.22 The Ffort Radisson a riverside resort at Raichak, West Bengal, a landmark designed by Kolkata based architect Shri Prabir Mitra, promoted by GGL Hotel & Resort Company Ltd.



8.23 Hotel Radisson Blue - Five Star Hotel & Spa at Sec-13, Dwarka, Delhi.



8.24 Hotel Radisson Blue - Five Star Hotel & Spa at Paschim Vihar, Delhi (worked up to concept stage).

- 8.25 Raichak Retreat – A riverside resort at Raichak, Kolkata in 2 acres of land designed by Sri Lanka based Architect Channa Daswathe for Ambuja Realty Development Limited.



- 8.26 Royal Palm Ville Resort at Bhubaneshwar in 18.0 acres of land for M/s S.J. Developers & Housing Pvt. Ltd., Bhubaneshwar designed by M/s. Innate, Kolkata – **ongoing project.**



- 8.27 Hotel Taj Vivanta at Kolkata for M/s Shriram Ozone Group, Kolkata designed by M/s. Edifice Consultants Private Limited, Mumbai – **ongoing project.**
- 8.28 Hotel Fairfield by Marriot at Kolkata for M/s Shriram Ozone Group, Kolkata designed by M/s. Upendra Nayak & Associates, Mumbai – **ongoing project.**
- 8.29 Imperial Lawns Resort & Banquet Facilities at Gwalior in 40.0 acres of land for M/s Sansai Properties And Hotels Private Limited, Gwalior – **ongoing project.**
- 8.30 Chia Kutir – A Taj Resort at Makaibari in 25 acres of land for M/s Vistar Properties Pvt. Ltd., Kolkata designed by M/s. Search, Mumbai – **ongoing project.**

- 8.31 Hotel Daob Vilas at Meerut in 2.5 acres of land for Mr. Sachin Chaudhary, Meerut.



- 8.32 Banquet Facilities at Gwalior in 12.0 acres of land for Rajshree Group, Gwalior – **ongoing project.**
- 8.33 HG Emerald Banquet Facilities at Gwalior in 2.62 acres of land for HG Group, Gwalior – **ongoing project.**
- 8.34 Banquet Facilities at Kolkata in 3.27 acres of land for Square Four Group, Kolkata– **ongoing project.**

## 9.0 RECREATION PARKS & SPORTS COMPLEXES

- 9.1 Tata's Sports Complex and Housing at Jamshedpur designed by M/S Arvind Gupta Associates, New Delhi. Cost of Project - Rs. 1 crore (approx.)
- 9.2 All India Lawn Tennis Association, New Delhi with Architects Bose Brothers, New Delhi (Competition).
- 9.3 Landscape proposal for India Gate Area Conceptual Stage) in association with CRAPHTS, New Delhi.
- 9.4 Beautification of Ajmeri Gate, MCD Park at Delhi.
- 9.5 Purani Delhi Haat, Delhi - Concept stage only.
- 9.6 Park for office buildings at 201, 202 and 203 Okhla Industrial Estate Phase - III, New Delhi and landscaping of various office buildings for Advance India Ltd., with architect Moti Bahri, New Delhi.
- 9.7 Mini Golf Course at Holambi Kalan, Delhi in 2.5 acres of land for R.P. Jain Charitable Trust, Delhi.

- 9.8 Swabhumi- The Heritage Park at 89 C, Narkel Danga Main Road, Kolkata - From Ganpati Parks Limited.



- 9.9 Chhatrasal Stadium, Model Town in 16 acres of land – A venue for Delhi Commonwealth Games 2010, with architects Benjamin Benjamin Vats, New Delhi. (Including preparation of drawings for DUAC approval).



- 9.10 Gaucity Sports Stadium at Greater Noida in 25 acres of land for M/s Gaursons Hi-Tech Infrastructure (P) Ltd., Greater Noida.



## **10.0 MISCELLANEOUS PROJECTS**

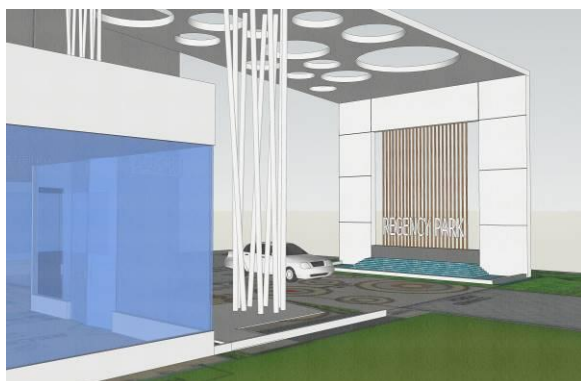
- 10.1 Prepared “Standard Bid Document for Landscaping and Plantation on National Highways of National Highways Authority of India” for EQMS India Pvt. Ltd., Delhi.
- 10.2 Herbal Garden at Haridwar, Uttarakhand in 17 acres of land for Patanjali Yogpeeth Trust, Haridwar.
- 10.3 Herbal Garden at Mussoorie, Uttarakhand in 2.75 acres of land for Patanjali Yogpeeth Trust, Haridwar.
- 10.4 Kshetropasna Ashram at Sriperumbudur, Chennai in 24 acres of land comprising of Ayurvedic Therapy Hospital & School, etc. for Pujyashree Prema Pandurang.



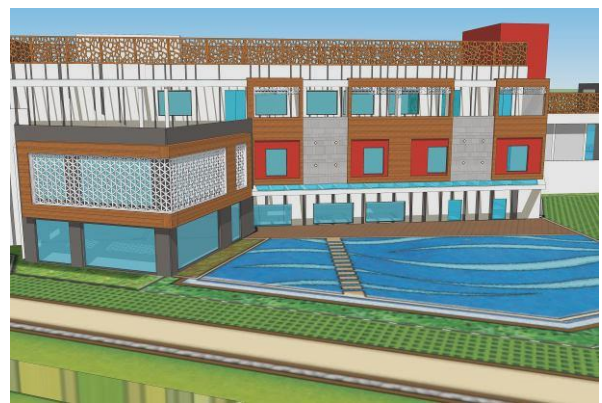
## SOME OF THE ARCHITECTURAL PROJECTS UNDERTAKEN BY THE FIRM

### 1.0 HOUSING

- 1.1 Housing society in Bareta, Punjab, in 5 acres of plot including Site Planning, Architecture, Landscaping of the society.
- 1.2 Club Building including interiors in Ajnara Gen-X housing at Crossing Republic, Ghaziabad with 15000 sqft. built up area for M/s Ajnara India Limited – **ongoing project.**
- 1.3 Club Building including interiors in Sun Valley Housing at Gwalior with 18000 sqft. built up area for M/s Sunlife Infratech, Gwalior – **ongoing project.**
- 1.4 Club Building including interiors in Geotech Prestine Avenue Housing at Greater Noida with 8500 sqft. built up area for M/s Geotech Homz Pvt. Ltd., Ghaziabad – **ongoing project.**
- 1.5 Club Building including interiors in Regency Pak Housing at Hissar with 9500 sqft. built up area for M/s Aarcity Builders Pvt. Ltd , Delhi – **ongoing project.**



- 1.6 Club Building including interiors in Saviour GreenArch Housing at Greater Noida with 2500 sqft. built up area for M/s New Way Homes Pvt. Ltd , Delhi – **ongoing project.**
- 1.7 Club Building in Fusion Homes Housing at Greater Noida for M/s Fusion Buildtech Pvt. Ltd, Greater Noida – **ongoing project.**



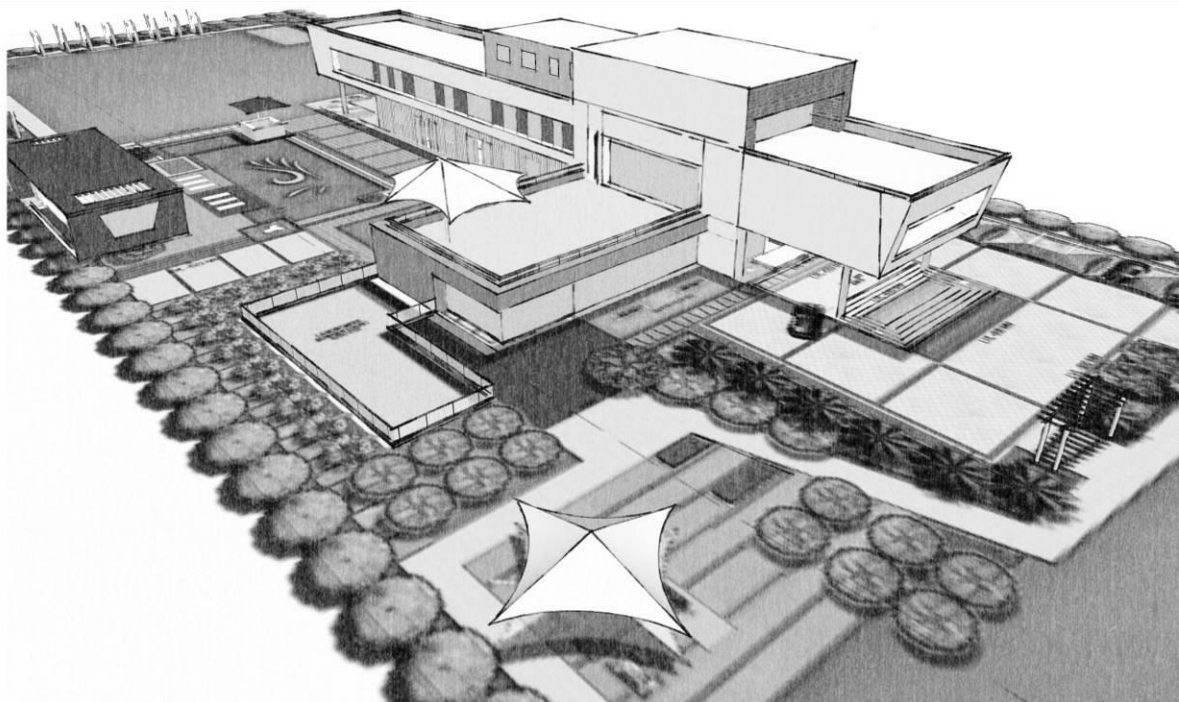
- 1.8 Club Building including interiors in Amaatra Homes Housing at Greater Noida with 11,250 sqft. built up area for M/s Nandi Infratech Pvt. Ltd, Greater Noida – **ongoing project.**



- 1.9 Club Building & Residential Tower Façade Treatment for French Apartment Housing at Greater Noida for M/s Anthem Infrastructure Pvt. Ltd, Greater Noida – **ongoing project.**

## 2.0 RESIDENTIAL

- 2.1 Bungalow for Smt. Bimla Poddar in 3 acres of plot at Samne Ghat, Banaras.
- 2.2 Bungalow for Dr. N.D. Gupta in 1000 sqyds. of plot at Hissar, Haryana.
- 2.3 Old Age Home at Holambi Kalan, Delhi in 5 acres of land for R.P. Jain Charitable Trust, Delhi.
- 2.4 Mr. Ashok Gupta's (Managing Director, Ajnara Group) Farm House at Noida. – **ongoing project.**



### 3.0 COMMERCIAL

3.1 CnC (Cash and Carry) Bharti Walmart for AIPL Ambuja with 50,000 sqft. built up area in 3.1 acres of plot at Amritsar including Landscape & Interior works.



3.2 DPL 24 High Street Mall in 2.0 acres of plot at Dharuhera for M/s Dwarkadhis Project Pvt. Ltd, Gurugram – **ongoing project.**



3.3 High Street Commercial in Fusion Homes Housing at Greater Noida for M/s Fusion Buildtech Pvt. Ltd, Greater Noida – **ongoing project.**



4.0 **CORPORATE & INSTITUTIONAL**

4.1 Sarvo Corporate Office in IMT Faridabad for M/s Sarvo Technologies Limited, Faridabad– **ongoing project.**



4.2 Pragati Vidya Peeth School in Gwalior for M/s Pragati Vidya Peeth School.



## SOME OF THE INTERIOR PROJECTS UNDERTAKEN BY THE FIRM

### 1.0 RESIDENCES & APARTMENTS

- 1.1 Residence for Mr. Rajinder Mohan at 120, Golf Links, New Delhi.
- 1.2 Apartment for Mr. Rajinder Mohan at 5C, White House, New Delhi.
- 1.3 Residence for Mr. Rakesh Mittal at Punjabi Bagh Extn., New Delhi.

### 2.0 OFFICES

- 2.1 Office for Mr. Rajinder Mohan at Antrish Bhawan, Connaught Place, New Delhi.
- 2.2 Office for Dr. Jaiveer Singh at Surya Niketan, New Delhi.
- 2.3 Office for Chartered Accountants at Laxmi Nagar Distt. Center, Delhi for M/s. Rajesh Wadera & Co., Delhi.

### 3.0 HOSTEL & GUEST HOUSES

- 3.1 VIP Guest House & Bachelors Hostel at Maratha Cement Township, Gadchandur for Gujarat Ambuja Cements Ltd., Mumbai.

### 4.0 HOUSINGS

- 4.1 Towers Entrance Lobbies interiors in Sun Valley Housing at Gwalior for M/s Sunlife Infratech, Gwalior – **ongoing project.**
- 4.2 Towers Entrance Lobbies & Sample Flat Interiors in Geotech Prestine Avenue Housing at Greater Noida for M/s Geotech Homz Pvt. Ltd., Ghaziabad – **ongoing project.**
- 4.3 Towers Entrance Lobbies & Club Interiors in Saviour GreenArch Housing at Greater Noida for M/s New Way Homes Pvt. Ltd., Greater Noida – **ongoing project.**
- 4.4 Towers Entrance Lobbies & Club Interiors in Amaatra Homes Housing at Greater Noida for M/s Nandi Infratech Pvt. Ltd., Greater Noida – **ongoing project.**



## KRISHAN C. SINGAL

<b>PROFESSIONAL QUALIFICATION</b>	Masters Degree in Landscape Architecture in 1978 from School of Planning and Architecture, New Delhi.
<b>AFFILIATION</b>	Fellow Member, Indian Society of Landscape Architects. Registration No. S-8/F2003.
<b>PRESENT POSITION</b>	Proprietor ' <b>SINGAL ASSOCIATES</b> ' Landscape Architects, Architects, Environmental Planners – Undertakes Consultancy Projects, 1990.  Teaching at Master Degree Level, as visiting faculty in the Department of Landscape Architecture, School of Planning and Architecture, New Delhi.
<b>PROFESSIONAL EXPERIENCE</b>	<b>Kuwait Engineers Office</b> , Kuwait Architects, Engineers and Planners, 1990.  <b>Town and Country Planning Organization</b> Ministry of Urban Development, Govt. of India, New Delhi (Gazetted Class I Post) 1987-1990  <b>Ravindra Bhan &amp; Associates</b> , Architects, Landscape Architects and Ecological Planners, New Delhi 1985-1987.  <b>Rasim Sha'ath</b> , Saudi Consultants, Architects, Engineers & Planners, Riyadh (Saudi Arabia) 1981-1985.  <b>Ravindra Bhan &amp; Associates</b> , Architects, Landscape Architects and Ecological Planners, New Delhi 1979 -1981.
<b>ARTICLES &amp; PAPERS PUBLISHED</b>	i) Article on "Waste Fly ash" has been published in the book titled "Topics on Landscape Engineering".  ii) Article on "Space Standards & Play Equipment for Children" has been published in the book titled "Play Areas, Planning for Play".  Both the books are edited by Prof. Hari K. Dhar, Head of the Department of Landscape Architecture, School of Planning & Architecture, New Delhi.  iii) 'Banaspati' a book on trees planted at Udita, The Condoville, Kolkata for Bengal Ambuja Housing Development Ltd. Kolkata.  iv) 'Banaspati' a book on trees planted at Upohar Housing, Kolkata for Bengal Ambuja Housing Development Ltd. Kolkata.  v) Article on 'Plants in Design' has been published in the book titled "Landscape Architecture in India - A Reader".



## RESUME OF EXPERIENCE

After doing Post Graduation in Landscape Architecture in 1978 from School of Planning & Architecture, New Delhi, I got an opportunity to work with M/S Ravindra Bhan & Associates, Landscape Architects & Ecological Planners, New Delhi. Professor Bhan is an eminent Landscape Architect and was formerly expert and head of the Department of Landscape Architecture, New Delhi. He is the recipient of the prestigious international Aga Khan Award and is one of the pioneers of Landscape Architecture in India.

In February, 1981, I started working with Rasim Sha'ath, Saudi Consultant in Riyadh as a Landscape Architect. During my employment with that firm I also worked on some of the projects awarded to that firm by the Royal Commission for Jubail and Yanbu, Jubail Industrial City, Kingdom of Saudi Arabia, with this I got familiar with the Royal Commission's Landscape design guidelines, specifications, standard details, plant material etc. and the working system of Royal Commission also. In addition, I got conversant with the latest advanced planting techniques, automatic irrigation system, storm water drainage & sub surface drainage system and landscape details etc. based on International standards (both design and execution stages).

On my return to India at the end of my contract I was again associated with Professor Bhan. Besides other projects I worked on a prestigious project of national importance, Shakti Sthal, a memorial for the Late Smt. Indira Gandhi (Former Prime Minister of India) is set amidst man made undulating terrain. As part of my job I have prepared grading plans, planting plans, storm water drainage, and sub surface drainage system drawings along with landscape details. These have been executed under my supervision.

From October, 1987 to 1990 I had worked as a Landscape Architect with the Town & Country Planning Organization, Ministry of Urban Development, Government of India, New Delhi. During this tenure I was intensively involved in assisting teams working on variety of planning projects related to tourism development, master plans, environmental improvement schemes & beautification proposals of immense value.

Again after working in Kuwait with Kuwaiti Engineers Office, KUWAIT for a short period, with a wide and varied international experience I started practicing in Delhi since 1990.



**SHAKTI STHAL (SANCTUM)**



**SHAKTI STHAL (ENTRANCE GATE)**



**SHAKTI STHAL (ENTRANCE COURT)**



**SHAKTI STHAL (WINDING PATHWAY)**

## SOME MAJOR PROJECTS DEALT IN INDIA

While working at **M/s. Ravindra Bhan and Associates, New Delhi**

- Shakti Sthal, New Delhi - The memorial for Late Smt. Indira Gandhi - Cost of Site Planning and Landscaping Rs. 30 million.

- Conservation and Planning of Ayodhya Ghats, (River Front Development) Faizabad (U.P.) - Cost of Site Planning and Landscaping Rs. 50 million.

- Landscaping of Mr. Naresh Kumar's Farm House at Mehrauli (Delhi) - Cost of Site Planning and Landscaping Rs. 1.8 million.

- Drainage and Lake Proposal for Churu Town - Rajasthan.

- Windsor Place Hotel, New Delhi

- Kanishka Ashoka Hotel, New Delhi

- Purolator India Ltd., Factory Parwanoo (H.P.)

- Escorts Factory, Faridabad (Haryana).

- Embassy of Turkey - New Delhi.

- City Centre Faridabad (Haryana) Competition, sponsored by Haryana Urban Development Authority where our entry had been selected in the first six best entries.

- Low Cost Housing Competition 1980 sponsored by Hyderabad Urban Development Corporation, Hyderabad where our entry had been awarded the second prize.

- Landscaping of Mr. Kamal Surana's Residence at Jaipur (Rajasthan). Cost of site planning and Landscaping Rs. 2 million.

- Purolator India Ltd. Factory, New Delhi

- Landscape Proposal for Fairway No. 4 Delhi Golf Course, New Delhi

- Andrews Ganj housing, HUDCO Palace, New Delhi



**SHAKTI STHAL (LAKE)**



**GHATS AND BHURJEES  
AT AYODHYA**



**PEDESTRIAN BRIDGE ACROSS  
WATER CHANNEL AT AYODHYA**

While working at **Town and Country Planning Organization, Ministry of Urban Development, Govt. of India, New Delhi.**

- Tourism Development Plan for Chittorgarh Fort (Rajasthan) - Cost Rs. 49 million.
- Tourism Development Plan for Golconda Fort, Hyderabad (A.P.) Cost Rs. 27.5 million.
- Tourism Development Plan for Chilka (Orissa) - Cost Rs. 45.2 million.
- Tourism Development Plan for Sankissa, Distt. Farrukhabad, U.P. - Cost Rs. 55 million.
- Landscape Development Proposal for Bay-View Recreational Complex - Phase II at Visakhapatnam (A.P.).
- Beautification of Pondicherry Town.
- Integrated Development Plan for Mandu (M.P.)



**PROPOSED TOURIST COMPLEX  
AT GOLCONDA FORT IN**



**PROPOSED TOURIST  
COMPLEX AT RAMBHA,  
CHILKA IN ORISSA**

#### **MAJOR PROJECTS DEALT ABROAD**

- Jame Al-Fanteen (Friday Mosque) at Madinat Al-Jubail Al-Sinaiyah for the Royal Commission for Jubail and Yanbu, accommodating 2,800 persons. (Worked in affiliation with Vollmer and Associates, Architects, Landscape Architects firm based in New York, (U.S.A.). Cost Saudi Riyals 80 million.
- Three Girls Elementary Schools and one Girls Secondary School at Madinat Al-Jubail Al-Sinaiyah for the Royal Commission for Jubail and Yanbu. Cost SR 35.4 million for each school.
- Institute for the Mentally Handicapped Boys at Riyadh for the Ministry of Education, Riyadh, Saudi Arabia, Cost SR 200 million.
- Residence for Sheik Turkey Al Sudeiry at Riyadh. Cost SR 25 million.
- Madaress Al-Tarbiya Al-Islamiya Girl's School, Riyadh. Cost SR 120 million.
- Residential Complex for H.E. Sheikh Abdul Aziz-Thenayan at Riyadh. Cost SR 40 million.
- Kuwait Live-Stock Transport Trading Project, Kuwait.
- Physiotherapy Centre at Khiran, Kuwait.